

FRBR : Extracts : Anne Welsh

IFLA Study Group on the Functional Requirements for Bibliographic Records. *Functional Requirements for Bibliographic Records. Final Report*. (IFLA Series on Bibliographic Control 19). Munich: K.G. Saur, 1998.

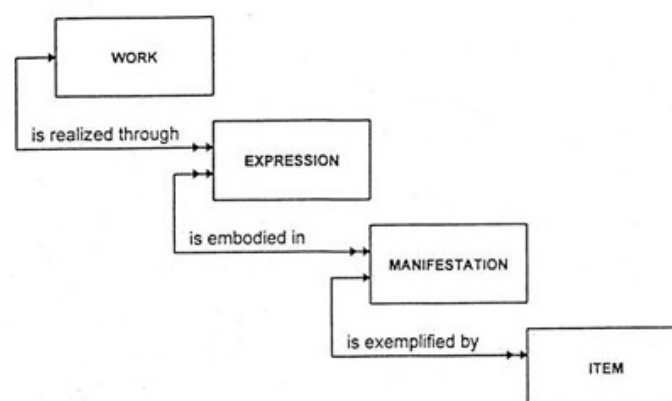
1998 text and current text (with amendments and corrections to date) available as PDF downloads from <http://www.ifla.org/publications/functional-requirements-for-bibliographic-records>

User Tasks (p. 79)

Four generic user tasks have been defined for the purposes of this study. The tasks are defined in relation to the elementary uses that are made of the data by the user:

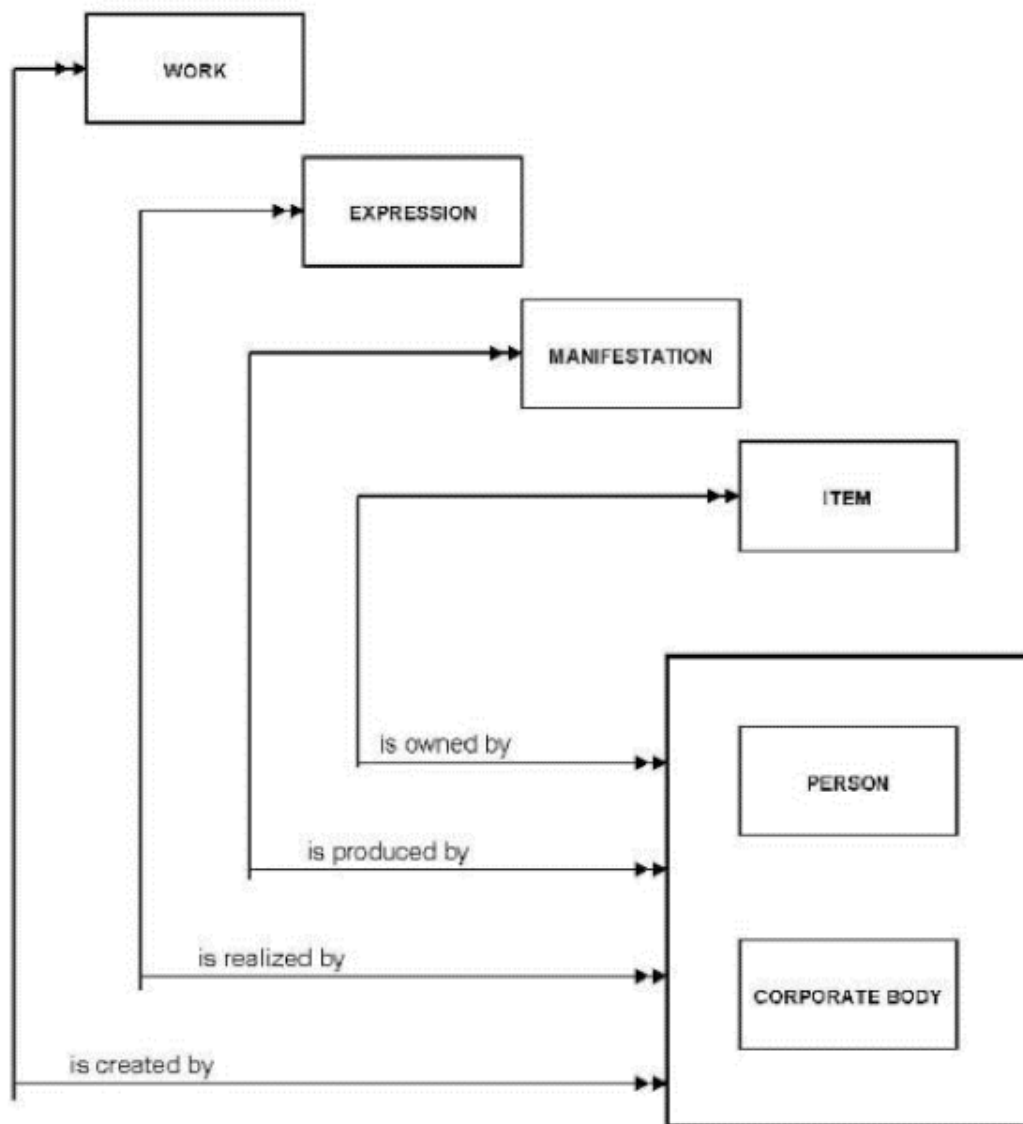
- to find entities that correspond to the user's stated search criteria (i.e., to locate either a single entity or a set of entities in a file or database as the result of a search using an attribute or relationship of the entity);
- to identify an entity (i.e., to confirm that the entity described corresponds to the entity sought, or to distinguish between two or more entities with similar characteristics);
- to select an entity that is appropriate to the user's needs (i.e., to choose an entity that meets the user's requirements with respect to content, physical format, etc., or to reject an entity as being inappropriate to the user's needs);
- to acquire or obtain access to the entity described (i.e., to acquire an entity through purchase, loan, etc., or to access an entity electronically through an online connection to a remote computer).

Figure 3.1: Group 1 Entities and Primary Relationships



(p. 14)

Figure 3.2: Group 2 Entities and “Responsibility” Relationships



(p. 15)